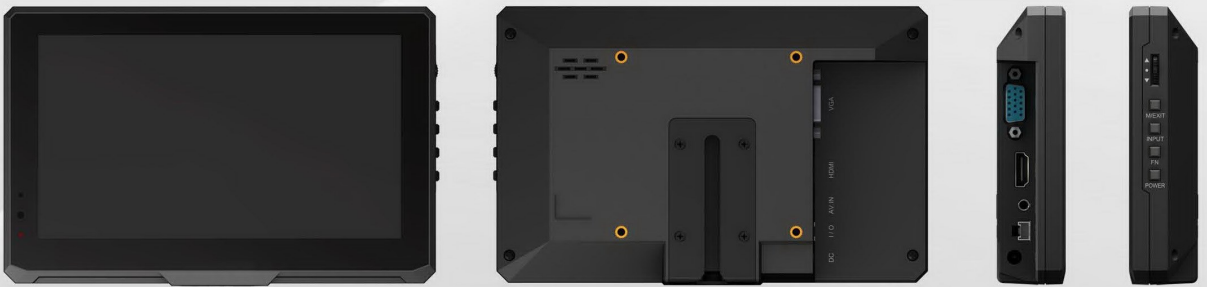


7" HDMI MONITOR WITH **CAPACITIVE TOUCH** FUNCTION

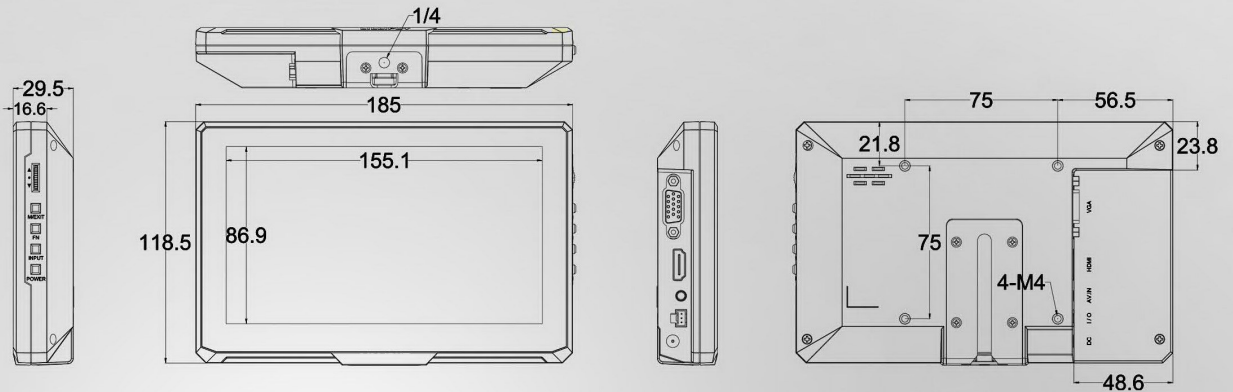


- › Multi-touch capacitive screen
- › Lux auto brightness
- › Integrated dustproof front panel
- › I/O control interface
- › HDMI, DVI & VGA inputs
- › High brightness: 400cd/m²
- › High contrast: 500:1

APPEARANCE



OUTLINE DIMENSION



FEATURES



LUX AUTO BRIGHTNESS (optional)

A light sensor designed to detect ambient lighting conditions adjusts the panel's brightness automatically, which makes viewing more conveniently & saves more power.



I/O CONTROL INTERFACE

The interface has functions such as connecting with reverse trigger line in car reversing system, and control computer host to switch on/off, etc. Functions also can be customized to meet different demands.

SPECIFICATIONS / ACCESSORIES

DISPLAY	Panel	7" LED backlit	1. I/O control line	1piece
	Touch Panel	Capacitive (support OS: Windows 7 or above) (optional)	2. VGA cable	1piece
	Physical Resolution	800 × 480 8bit	3. HDMI A/A cable	1piece
	Aspect Ratio	16:9	4. A/V input cable	1piece
	Brightness	400cd/m ²	5. Remote control	1piece
INPUT	Contrast	500:1	6. Bracket	1piece
	Viewing Angle	140° /120° (H/V)	7. 12V DC adapter	1piece
	HDMI	1	8. Manual	1 copy
	VGA	1	9. HDMI to DVI cable (optional)	1piece
	DVI	1 (optional)	10. VESA battery plate (optional)	1piece
AUDIO	Composite	1	11. Battery plate (optional)	1piece
	I/O port	1		
POWER	Speaker	1		
	Current	450mA		
	Input Voltage	DC 12V		
ENVIRONMENT	Battery Plate	F970 / QM91D / DU21 / LP-E6		
	Power Consumption	≤4.5W		
	Operating Temperature	-20°C~60°C		
OUTLINE DIMENSION	Storage Temperature	-30°C~70°C		
	Dimension(LWD)	185 × 118.5 × 29.5 mm		
	Weight	415g		

